

## Business Tips, Workshop Speakers

### Facilitator: Penelope England – Chief Executive Officer, Rural Women New Zealand

---

#### Jon Watson – National Manager – Rural, NZI.

One of the country's most respected insurance professionals, Jon has a wealth of experience in the Rural segment, both at work and in his rare spare time.

With a background in risk, insurance underwriting, loss adjusting and claims, Jon now works closely with farmers, brokers and businesses to develop products and services that address rural needs, combining his extensive knowledge of the rural segment, insurance and risk.

Known as the 'rural guy' at NZI, this job isn't for the faint hearted, so when Jon does get some respite, he relaxes on his block near Geraldine, which includes sheep, walnut and chestnut trees.



---

#### Kathryn Pengelly – Senior Insurance Lawyer, NZI.

Kathryn Pengelly is a senior insurance lawyer with more than 18 years' legal experience in New Zealand and the UK. She currently works at IAG (NZI is IAG's leading commercial insurance brand) and regularly reviews communications, marketing campaigns, business processes and contracts to ensure they are legally compliant.



---

#### Jess Etheridge – Media Relations Specialist, NZI.

Jess Etheridge is IAG New Zealand's media relations specialist working across all of the insurer's brands. Graduating from AUT in 2011 with a Bachelor of Communication Studies and a major in journalism, she's worked across some of New Zealand's best-known news titles, including Stuff.co.nz. Jess moved into public relations in 2015 and has worked in both the public and private sector, managing risk and reputation media issues.



## Business Tips Workshop Speakers

### Amelia Ritchie – Digital Engagement Specialist, NZI.

A qualified journalist, specialising in motoring, Amelia can often be seen at the edge of a racetrack photographing cars and creating compelling social media content. With five years' experience in content creation and social media strategy and campaign management, Amelia knows how to engage customers, create eye catching content and target the right audience for the right message.

Amelia's broad social media knowledge has led to her to work on social strategies for a wide range of organisations – from corporates, small businesses to charities and social enterprises.



---

### Jennifer Pelvin – Director, Butler Pelvin & Associates

Jennifer is an experienced Board member and chair with over 30 years' experience working in governance and strategic positions. She has a successful business in Wellington providing management and governance services to not-for-profit and government organisations. Having been involved with membership associations for all of her working life means Jennifer has a thorough knowledge of organisational operations along with extensive experience in strategy and governance.

Consulting and mentoring since 2007, gives a depth and breadth of experience in membership organisations, industry and government working groups. In all her governance roles, Jennifer is visionary, strategic, invested, accountable and collaborative.



---

### Claire Hinton – Senior Stakeholder Advisor, Ministry of Business, Innovation and Employment.

Business.govt.nz is the home for Kiwi businesses online, packaging information and innovation from the public and private sector into resources designed to make business easier. Every month a quarter of a million businesses use its world leading services



## Policy Workshop Speakers

### Business Policy Workshop

#### Facilitator: Julia Jones – Farm Enterprise Specialist, Agri-Food, KPMG

Julia Jones is driven by the desire to inspire a new generation of food producers. She is part of the KPMG Agri-Food team who look at the changing global face of Agri-Food by connecting food producers with long term sustainable business Solutions.

In 2010 Julia completed an Agri program through Harvard Business School in China, this program fired her passion for international Agriculture. In 2012 she graduated from the Agri Women's Development Trust Escalator Governance Program, and 2013 brought an opportunity to spend time working in Russia with the KPMG team focusing on Agricultural strategy.

More recently she received the MPI/Agmardt emerging leaders' scholarship and attended the 2017 Te Hono Bootcamp at Stanford University and has been appointed to the Primary Sector Council.



---

#### Emma Higgins – Dairy Analyst, Rabobank

Rabobank's local research division is comprised of 12 analysts, who are charged with analysing developments in food and agricultural markets and industries, and advising the bank and its clients on strategic implications for their businesses.

RaboResearch Food & Agribusiness is part of a broader global team of 80 analysts, located in major food production regions of the world. Before joining Rabobank, Emma has worked as a tax consultant with KPMG for three years. She holds a Bachelor of Laws and is an enrolled barrister and solicitor of the High Court of New Zealand.



---

#### Jon Cable – Policy Advisor, Ministry of Business Innovation and Employment (MBIE)

Jon and his team have a wide remit to build firm capability to grow. His team develops policies to encourage firms to undertake growth enabling activities, which includes seeking information, undertaking innovation, investing in productive assets, internationalising and the development of management capability.





## Policy Workshop Speakers

### Business Policy Workshop

#### Kerryn Fowlie – Policy Director, Ministry of Business Innovation and Employment (MBIE).

Kerryn is a Policy Director in the Tourism and Economic Development Branch of MBIE. She is currently working with the newly established Just Transitions Unit to support the delivery of its work programme, including in the Taranaki. She has previously worked in numerous agencies across government, including most recently as the Head of the Research and Analysis Unit in the Economic Division at the Ministry of Foreign Affairs and Trade, and prior to that a number of positions across the Treasury. Kerryn was formerly the Economic Counsellor for New Zealand's Permanent Delegation to the OECD.



---

### Education Policy Workshop

#### Briar Lipson-Research Fellow- The New Zealand Institute

Briar is a Research Fellow specialising in education. Before joining the Initiative she was a Maths teacher and Assistant Principal in London, where she also co-founded the Floreat family of primary schools. Briar has worked for International Education consultancy CfBT, and the Westminster think tank Policy Exchange. She holds a Masters Degree in Economics from the University of Edinburgh.



---

#### Gerald Minnee – Policy Director, Ministry of Business Innovation and Employment (MBIE)

Gerald is a Policy Director, working in the Labour and Immigration Policy Branch at MBIE. The Branch advises the Government on labour market policy and employment, including being the lead advisor on immigration policy, employment relations and standards, health and safety, and accident compensation policy. Before joining MBIE, Gerald was employed at Treasury, leading across a wide range of social and economic policy issues. His most recent assignments have included helping establish Oranga Tamariki as a standalone Ministry (taking over responsibility for Child, Youth and Family services); leading the design and implementation of the Data Future Partnership; and leading the Strategic Policy Group within the Ministry of Health (on secondment).



## Policy Workshop Speakers

### Environment Workshop

#### Facilitator: Brian Monahan - Entrepreneur

Brian has been known to convey his passionate vision for a more just and sustainable world, and New Zealand's potential role within it. Brian studied at Harvard University before learning to start Inflection with his brother Matthew, a big data company with a focus on people, privacy, trust, and safety.

He is also a founding director at Namaste Foundation, which supports exceptional not-for-profits in their pursuits of a more beautiful world, and is the Director of Partnerships at the Edmund Hillary Fellowship.



---

#### Dr David Prentice - Chair of the Interim Climate Change Committee.

Most recently, David was the CEO and Managing Director of Opus International Consultants. He is Chair of Business New Zealand's Infrastructure sub-group, a member of the Institute of Directors, a Chartered Professional Engineer and a Fellow of Engineering New Zealand.



---

#### Nick Edgar - Chief Executive Officer, NZ Landcare Trust

Nick Edgar has a background in applied freshwater management, with past research efforts focused on improving the water quality of lake ecosystems. Nick has worked as an environmental scientist for regional government (Waikato Regional Council), as a natural resource specialist in academia (Central Queensland University, Australia) and as a research manager for the NZ Landcare Trust.

Nick has been the Chief Executive Officer of the NZ Landcare Trust since 2007 and has been involved in a range of catchment management and biodiversity projects and initiatives in New Zealand and internationally. Most recently, the NZ Landcare Trust partnered with WWF-NZ to deliver Reconnecting Northland - an innovative landscape scale ecological restoration programme. Nick has a keen interest in community involvement in resource management decision making and action, in particular, working with farmers to implement practical land and water management projects.



## Policy Workshop Speakers

### Environment Workshop

#### Alison Dewes – Head of Environment, Pāmu

Alison is a fifth generation dairy farmer and second generation veterinarian. She practised as a large animal vet for 20 years, recently completed a MSc in Ecology and Policy, and is presently head of environment for Pāmu. Previous roles include the establishment of Tipu Whenua, managing Intelact Australia, business development for Nestle Australia and Commonwealth Bank, and sustainable agricultural advisor for Raukawa Charitable Trust.

She has skills in animal health, nutrition, agricultural business performance, adult education, policy and ecosystem health. She was on the NZ Veterinary board until 2017, was finalist for NZI sustainability champion in 2014, and a finalist in the 2015 Women of Influence awards in public policy.



---

### Health Workshop

#### Facilitator: Margaret Pittaway – Board Member, Rural Women New Zealand

Margaret joined Rural Women New Zealand in 1996 and has been a very active and dedicated member at all levels since that time.

Since Margaret's initial election as National Councillor Region One in 2011 and subsequent election as South Island National Board Member, Margaret has immersed herself in the business of Rural Women New Zealand.

Margaret has utilised her nursing background in her role as Health Portfolio Convenor. In this role, Margaret has championed the problem of the falling numbers of midwives as well as the closure of some rural maternity hospitals.



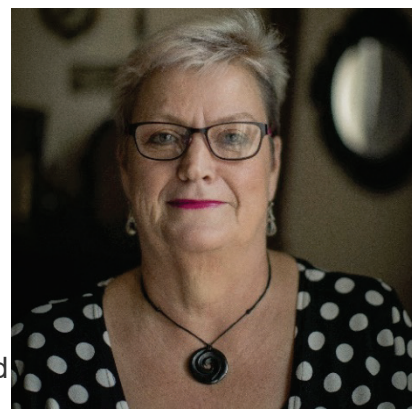
---

#### Heather Henare – Chief Executive, Skylight Trust

Heather has been Chief Executive of Skylight Trust since February 2015. Skylight supports people of all ages throughout New Zealand, who are facing any kind of tough life situation. We specialise in grief, loss and trauma and aim to provide the right help, at the right time, in the right way.

Skylight offers counselling support services, resources, information, and guidance to over 16,000 New Zealanders each year.

Heather began her career working as an advocate for Rape Crisis and Women's Refuge in the late 1970's. Heather has held positions at Child Youth and Family, has worked for the Commissioner for Children and was CEO of The National Collective of Independent Women's Refuge.





## Policy Workshop Speakers

### Health Workshop

#### **Karen Guilliland - Chief Executive, New Zealand College of Midwives (NZCOM)** MA, RGON, RM, ADN, MNZM

Karen is currently Chief Executive of the NZCOM with nearly 50 years' experience in a wide variety of clinical practice as a nurse and midwife (both core and caseload) which include teaching and research, governance and management positions. She provides advice on midwifery policy, regulation and education internationally and nationally to Government advisors and across the health sector. She is an executive member of the Primary Health Alliance and the Establishment Board of the Federation of Primary Health Aotearoa.

Karen is currently a Co-Chairperson of the International Confederation of Midwives (ICM) Regulation Committee and has been on the Scientific and Professional Programming Committee (SPPC) as Co-Chairperson for 6 years and continues as a Member currently. She was a longstanding Asia Pacific representative on the International Confederation of Midwives Board and has published numerous papers, articles, books and book chapters nationally and internationally. She has presented at many international conferences as a keynote speaker on midwifery, rights in childbirth and women's rights. Karen currently leads the pay equity claim for the College of Midwives.



---

#### **Stephanie Clare - Chief Executive, Age Concern New Zealand**

As the Chief Executive of Age Concern New Zealand, Stephanie feels at home surrounded by people. Her role is all about people, people doing things with older kiwis, providing connections, education, support and advocacy.

She leads a strong team who makes a difference in the lives of older New Zealanders every day, through health promotion and social connection activities, our visiting service and elder abuse response services. Passion for your work is very important to Stephanie and enjoying the work you do. Like her other roles as a nurse, no day is the same and opportunities continually present themselves.



## Policy Workshop Speakers

### International Workshop

#### **Beryl Anderson – Information Services Manager, Institute of Environmental Science and Research Ltd (ESR)**

Beryl Anderson has a 40+ year career in librarianship, working in Lower Hutt, Wellington, Fiji, Rotorua and currently in Porirua, mostly in science libraries.

Joining the National Council of Women of New Zealand (NCWNZ) in 1989 in Rotorua, Beryl served on the Branch executive and attended her first 2014 to present. Beryl has been involved with the preparation of four NGO reports to CEDAW, and attended the United Nations on three occasions (2007, 2012, 2018) to present the NZ NGO CEDAW Alternate Report.



---

### Social Workshop

#### **Facilitator: Penny Mudford ONZM – National Chair, Rural Women New Zealand**

Penny Mudford is an independent director and arbitrator. She is a Fellow of the Arbitrators' and Mediators' Institute of New Zealand, a Chartered Member of the Institute of Directors, and a member of the New Zealand Global Women and Arbitral Women International. Penny has held leadership roles in various sectors and is a supporter of women's leadership.

Penny has held director positions on a number of boards in both the public and private sectors. She has written and presented papers in New Zealand and Australia on specialist topics and is author of the chapter Rural Arbitrations in Green and Hunt's Arbitration Law and Practice and the chapter Dispute Resolution in Retirement Villages for the book Elder Law in New Zealand, both published by Thompson Reuters. Penny is a former chief Executive of the Arbitrators' and Mediators' Institute and of the Institute of Financial Advisors.

From 1981 to 2001, Penny was a working dairy farmer, raised a family on a rural property in Manawatu and participated on dairy industry committees and rural organisations. During this time, she held positions with Manawatu-Rangitikei Federated Farmers and elected Provincial President in 1999. Penny was a supplier representative for Tui Milk Products and Kiwi Cooperative Dairies prior to the establishment of Fonterra in 2001.





## Policy Workshop Speakers

### Social Workshop

#### Nancy Tuaine - Chief Advisor, Te Puni Kōkiri

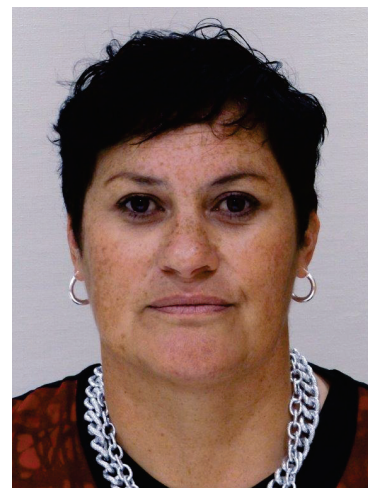
E rere kau mai te Awa nui mai I te Kāhui Maunga ki Tangaroa

Ko au te Awa, Ko te Awa ko au.

Nancy provides strategic oversight on social and health policy and has primary responsibility for the whānau centred approach of Whānau Ora.

Whānau Ora is about increasing the wellbeing of individuals in the context of their whānau. It differs from traditional social and health approaches that focus solely on the needs of individuals. Whānau Ora recognises the strengths and abilities that exist within whānau and aims to support and develop opportunities that fulfil potential.

Two days of the week Nancy is also at the Ministry for the Environment working on the Water Taskforce established to progress the Governments Essential Water Programme.



---

#### Mike Chapman - Chief Executive, Horticulture New Zealand

Mike has been in the role since January 2016. Mike is committed to the organisation's mission: creating an enduring environment where growers prosper. This includes protecting land and water rights, advocating for growers on critical regulation, policy and law changes, skilled and reliable labour and representing the industry at all levels of government in Wellington.

Previously Mike was the Chief Executive of NZ Kiwifruit Growers Incorporated, Chief Executive of Kiwifruit New Zealand, and worked in law, including for the NZ Defence Force. He was an inaugural Director Kiwifruit Vine Health Incorporated, and is currently the Deputy Chair of Toi Ohomai Institute of Technology. Mike was admitted as a Barrister and Solicitor in 1982 and holds a current practicing certificate.



## Policy Workshop Speakers

### Social Workshop

#### David Wansbrough – National Recovery Manager, MPI

David Wansbrough is the National Recovery Manager for the *M.bovis* programme at the Ministry for Primary Industries. He has been a public servant for 20 years and has managed to spend most of that time involved in highly polarised topics – genetically modified food, spraying Auckland with pesticide, biosecurity, immunisation, animal welfare, climate change, and now *Mycoplasma bovis*.

In a previous role David was responsible for the primary industry adverse events policy and developing recovery packages after floods, droughts and earthquakes. Before moving to Wellington, David lived in Canberra and worked in the Department of the Prime Minister and Cabinet. David has degrees in Science, Science Communication, and Public Policy and is passionate about good communication and plain English.



### Technology Workshop

#### Facilitator: Craig Young - Chief Executive, TUANZ

Craig is passionate about digital technology and communications industry because of the opportunity it offers for improving business and personal lives in New Zealand. He is currently the Chief Executive of the TUANZ which is helping New Zealand make the most of the digitally connected world. TUANZ is an independent member based organisation representing users of tech which educates and advocates for the uptake of digital technology and the improvement of communication services across NZ.

TUANZ has a proud history of providing leadership in representing the views and needs of the people and businesses that rely on technology every day. They have recently launched their future leaders in tech (FLINT) programme which aims to bring people together who are in their first few years of their full time career in digital tech roles or organisations.

He has had a number of roles in the ICT industry over his career with his most recent role prior to TUANZ being at Chorus where he led the multilateral engagement with industry stakeholders and customers.

He was heavily involved in providing leadership in several industry sectors including Chorus' rural broadband commitments. He was responsible for the RBI Advisory Committee and also heavily involved with commercial and regulatory efforts on behalf of TelstraClear in previous roles.



## Policy Workshop Speakers

### Technology Workshop

#### Graham Mitchell - CEO, Crown Infrastructure Partners

Graham Mitchell is CEO of Crown Infrastructure Partners, established by the New Zealand Government to invest NZ\$1.6 billion with private sector partners to deploy ultra-fast broadband (Fibre-to-the-Premise) to 86% of the population by 2022 and now overseeing the roll out of the Rural Broadband Initiative phase two/Mobile Black Spots Fund (RBI2/MBSF).

Prior to this, Graham was the CEO of Cogent Communications, part of the OneSource Group. Before then, he headed US telecommunications venture capital funded, Optical WDM OEM. During ten years spent at Telecom New Zealand he held senior positions including Group GM of Business, Wholesale and Network Services and GM of the Internet and Directories Division, both in Australia. Graham's considerable corporate finance experience is derived from roles with Telecom, Brierley Investments, Electricity Corporation and Transpower.



---

#### Renee Duffell - Policy Advisor, Ministry for Business Innovation and Employment.

Renee is a Policy Advisor in MBIE's ICT Policy and Programmes Team. Since joining the team in October 2016, Renee has worked on legislative reforms relating to property access for fibre installations, consenting of infrastructure deployment, and enhancing broadband and mobile connectivity more generally. Renee has worked in the public sector for five years.



---

#### Janelle Whittleston - Acting Manager, ICT Policy and Programmes, Ministry for Business Innovation and Employment.

Janelle is currently the Acting Manager of MBIE's ICT Policy and Programmes Team. Prior to this, Janelle's substantive role was Principal Policy Advisor of the team. She joined the team in June 2017. Janelle has worked in policy for 11 years. This policy team supports delivery of New Zealand as a leading digital nation by encouraging investment in communications infrastructure to facilitate resilient and widespread connectivity, and enable participation. The team has responsibility for the policy settings behind the government's investment in broadband and mobile infrastructure, as well as recent legislative reforms relating to consenting for infrastructure deployment.



## Policy Workshop Speakers

### Technology Workshop

#### Bridget Canning - CEO, WIZwireless

Being a rural woman, mother, farmer and business owner, Bridget knows first-hand how frustrating poor internet can be. WIZwireless Limited is a rural broadband company formed by shareholders Bridget and John Canning, who have a passion to give everyone in our area great internet. We specialise in providing wireless broadband for rural users in Wairarapa and into parts of Tararua.

Bridget and John started their business to solve the rural issues with broadband in our region. From being an idea on how to work remotely from home, the company has evolved into an award-winning business with a big reputation for getting internet “sorted” for rural people. It was a challenge but with around 115 sites covering what can be best described challenging rural environments and hard to reach places which national operators shy away from. They get a real kick from providing high quality, affordable broadband to the families who are the backbone of New Zealand.

---

